



# FLN

## WHAT WORKS

### ALFA

## EVIDENCE REPOSITORY

*Accelerating  
Learning for All*

# Executive Summary

## Multiple Evidence Forms, Pointing in One Direction

**Accelerating Learning for All (ALfA)** is a groundbreaking paired learning pedagogy that enables children to learn foundational skills in as little as 45 days. The program uses simple, highly visual modules and hands-on activities to make learning swift and enjoyable. ALfA is being used in over 10,000 government schools around India, and at a smaller scale internationally in Ghana, Peru and Maldives.

**This brief presents the quantitative evidence for ALfA, arising from four distinct sources:**



### GOVERNMENT'S OWN TESTS (P4-5)

Government tests such as the PARAKH Rashtriya Sarvekshan (PRS) are conducted at a large scale, geography wide. While granular school- or student- level data isn't publicly available, we can observe interesting trends at the district level. Generally, districts using ALfA at scale - from Lucknow, Shamli and Barabanki in UP to Solan in HP - have made larger gains than their state averages.

### 4 + 4 RESEARCH PILOTS (P8-9)

The DEVI team has conducted numerous research pilots using a mini-RCTs (randomised control trials). The assessments have generally been conducted by DIET or other college students, under the purview of DIET Principals and/or BSAs. This rigorous research design enables effect size calculations.

### THIRD PARTY EVALUATIONS (P6-7)

ALfA implementation in Shamli, UP has been studied by researchers at Harvard Graduate School of Education, featuring in a book by Prof. Fernando Reimers. Internationally, ALfA has been implemented and studied by agencies such as Olinga Foundation (Ghana), ArcaBeta NGO (Peru), and Ministry of Education & UNICEF (Maldives).

### LARGE-SCALE ASSESSMENTS (P10-11)

In some geographies, DEVI Sansthan has also conducted tests of thousands of students. These NIPUN competency assessments offer a rich database of student- and school- level progress. While these geographies did not have control schools, testing across multiple grades allows a pseudo-longitudinal approach which indicates that a few months of ALfA is worth several years of business-as-usual schooling.

# RAPID RESULTS INITIATIVES RRI

Using a 3-stage Rapid Results Initiative, and by showcasing results in a short time, DEVI's FLN work has expanded rapidly across India and increasingly worldwide.

## Stage 1: Study



Study of existing impact or pilot / Randomized Control Trial (RCT).

## Stage 2: Scale



Scale to thousands of schools.

## Stage 3: Sustain



Integrate system-wide (supplement or embedded).

Learn more



Click Here

### GOVERNMENT'S OWN TESTS

Himachal Pradesh  
Uttar Pradesh

### LARGE SCALE ASSESSMENTS

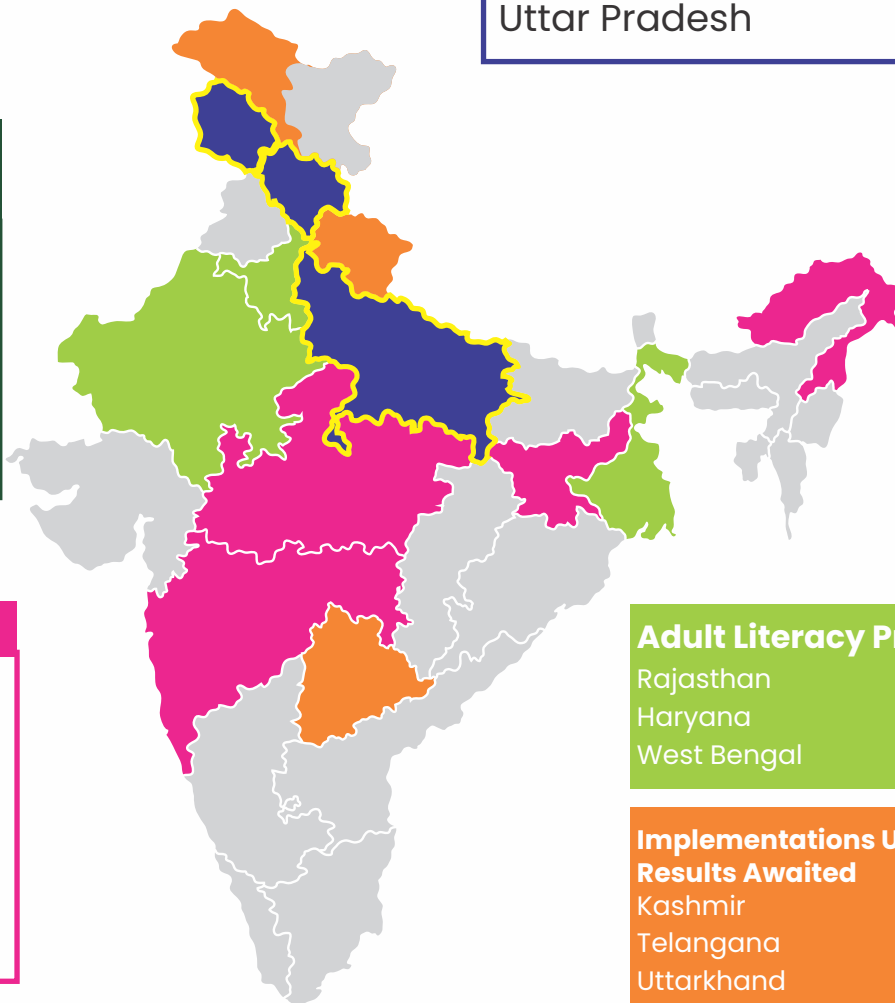
Jammu  
Himachal Pradesh  
Uttar Pradesh

### THIRD PARTY EVALUATIONS

Shamli,  
Uttar Pradesh  
Ghana  
Peru  
Maldives

### 4 + 4 PILOTS

Maharashtra  
Madhya Pradesh  
Jharkhand  
Arunachal  
Uttar Pradesh



### Adult Literacy Programs

Rajasthan  
Haryana  
West Bengal



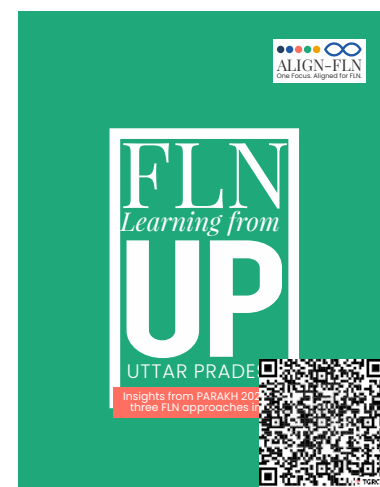
### Implementations Underway, Results Awaited

Kashmir  
Telangana  
Uttarkhand

# Government's Own Tests Evidence at Scale

The National Achievement Survey (NAS) 2021 tested 5.44 lakh students across over 28,000 schools; finding an overall result of 62% in language and 57% in mathematics for Grade 3. By the time of Parakh Rashtriya Sarvekshan (PRS) 2024, with an even larger sample of 21.15 lakh students across over 74,000 schools, test scores had risen only marginally to 64% in language and 60% in mathematics.

The first piece of evidence for ALfA efficacy is that districts implementing ALfA have experienced a larger gain from 2021 to 2024 than other approaches (by other NGOs' cluster of districts). This does not prove causality, but in relation to other approaches, seems to suggest that classroom-based interventions may matter more than we think.



Scan QR to read a detailed analysis of UP NAS 2021 to PRS 2024 results

Group	Grade 3 Language			Grade 3 Numeracy		
	NAS 2021 (%)	PRS 2024 (%)	Gain (pp)	NAS 2021 (%)	PRS 2024 (%)	Gain (pp)
India Overall	62	64	+2	57	60	+3
UP Overall	58	68	+10	54	64	+10
LLF (5 districts)	60	68	+8	55	64	+9
CSF (6 districts)	58	64	+6	53	60	+7
DEVI (4 districts)	61	74	+13	55	69	+14

Another large scale government test which indicated ALfA's efficacy was the NIPUN Assessment Test 2023 (Uttar Pradesh). While the state overall had 24% of schools declared NIPUN, in Shamli district (where 200 schools were using ALfA) 36% became NIPUN. More remarkably, Hilauli block (155 of 155 schools using ALfA) achieved 47% of schools NIPUN status, over triple the rate of Unnao district (15%).

## Strengths of this Evidence Form

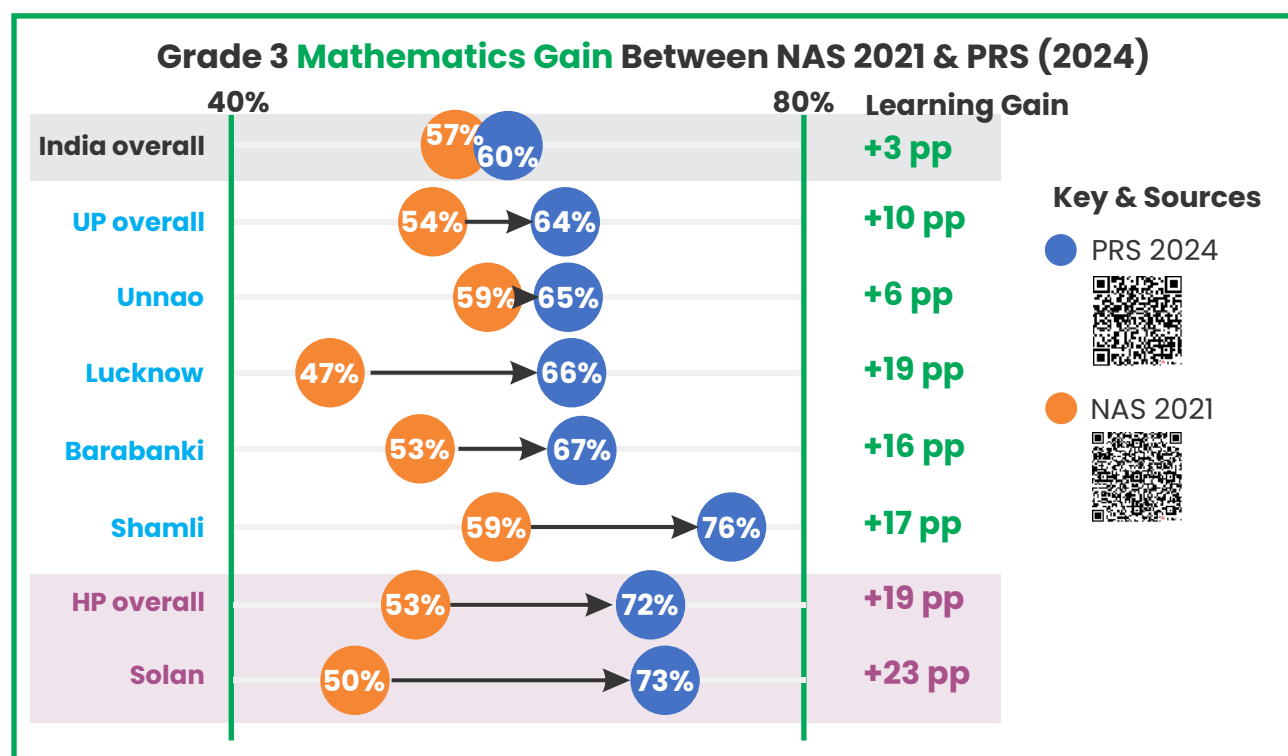
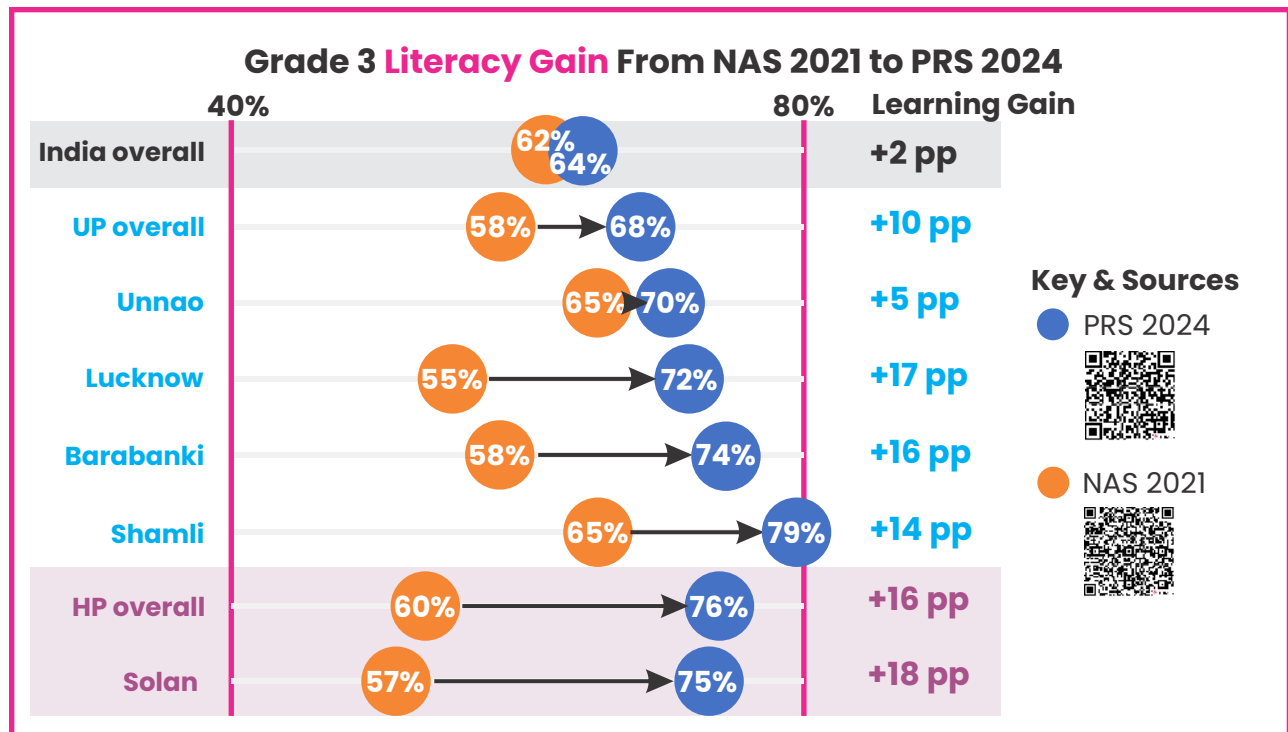
- ✓ Very large sample size
- ✓ Allows macro-scale comparison
- ✓ Data trusted by government
- ✓ Competency-wise data is available

## Limitations of this Evidence Form

- ✗ Tests only conducted infrequently
- ✗ Granular school & student level data not publically available
- ✗ Doesn't prove causality, only correlation

# RESULTS AT SCALE NAS 2021 to PRS 2024

Districts using ALfA at scale saw large improvements in their score for Grade 3 language and maths in Parakh 2024, compared to the NAS 2021. ALfA-implementing districts in Uttar Pradesh saw an increase of 13 percentage points in language and 14 pp in maths - well above the state average of 10pp. District Solan in Himachal Pradesh saw even larger improvements of +18 pp and +23 pp, also well above state average.



# Third Party Evaluations Rigorous Evidence

The ALFA program has been evaluated by partner organisations in several implementations both within India and internationally, as shown in the table below. In Shamli, DEVI conducted the implementation and Harvard students evaluated it. In other countries, DEVI has conducted online training and provided materials, while the local partner has implemented and also conducted testing.

Geography	Evaluator/ Partner	Design	Schools (ALFA + non)	Students (ALFA + non)	Duration
Shamli, India	HGSE	RCT	10 + 10	420 + 547	July–Oct 2022
Maldives	Ministry of Education & UNICEF	RCT	13 + 5	665	Sept–Dec 2023
Ayensuano, Ghana	Olinga Foundation	RCT	12 + 9	604 + 377	2 Phases in 2024 & 2025
Loreto State, Peru	ArcaBeta NGO	Pre-Post	2 + NA	360	2 Phases in 2024 & 2025

## HARVARD UNIVERSITY

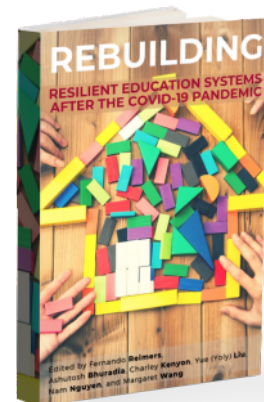
“

*The effect size of the project was **0.23 for Grade 3** students and **0.89 for Grade 5**... the results suggest there is significant value in pursuing the ALFA model in other schools if implemented in a coherent, structured, and coordinated manner.*

”



[Click Here](#)



by Prof. Fernando Reimers, et. al.  
Harvard Graduate School of Education

### Strengths of this Evidence Form

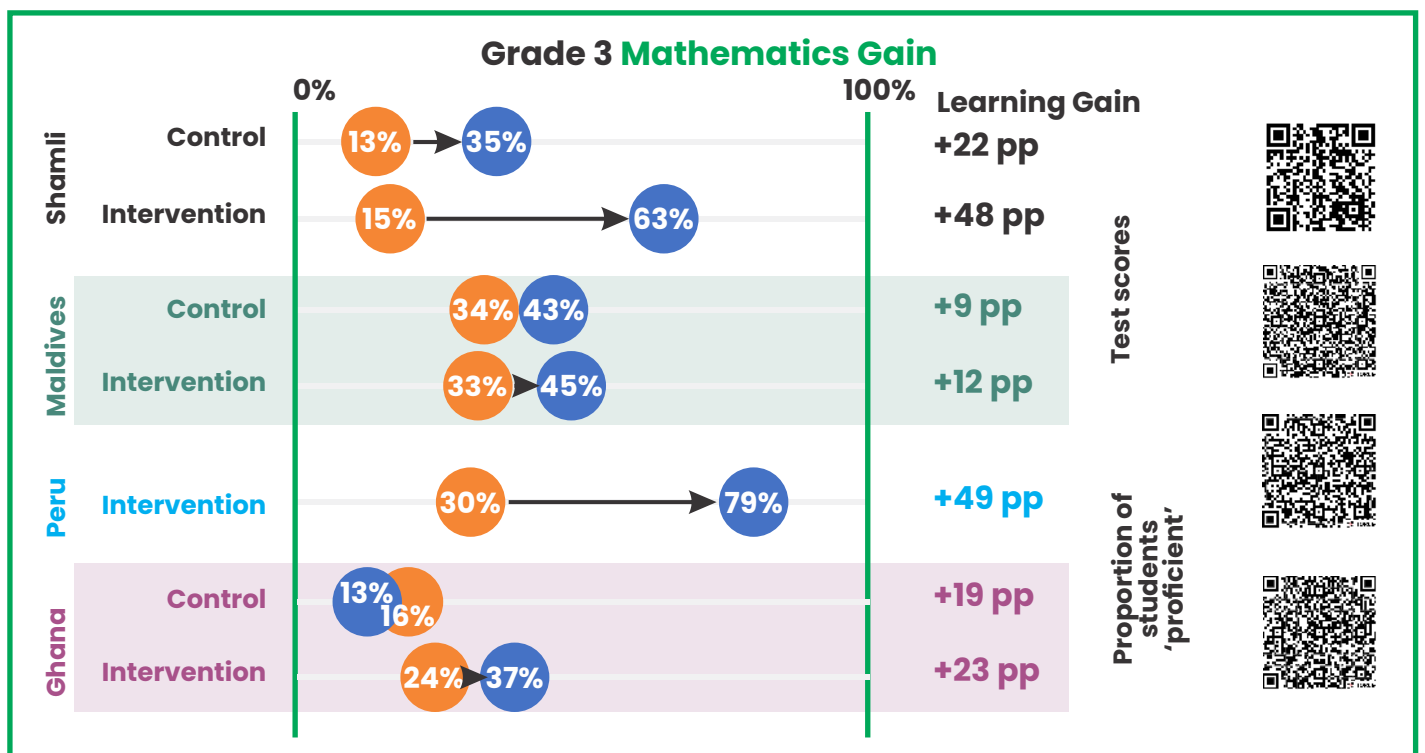
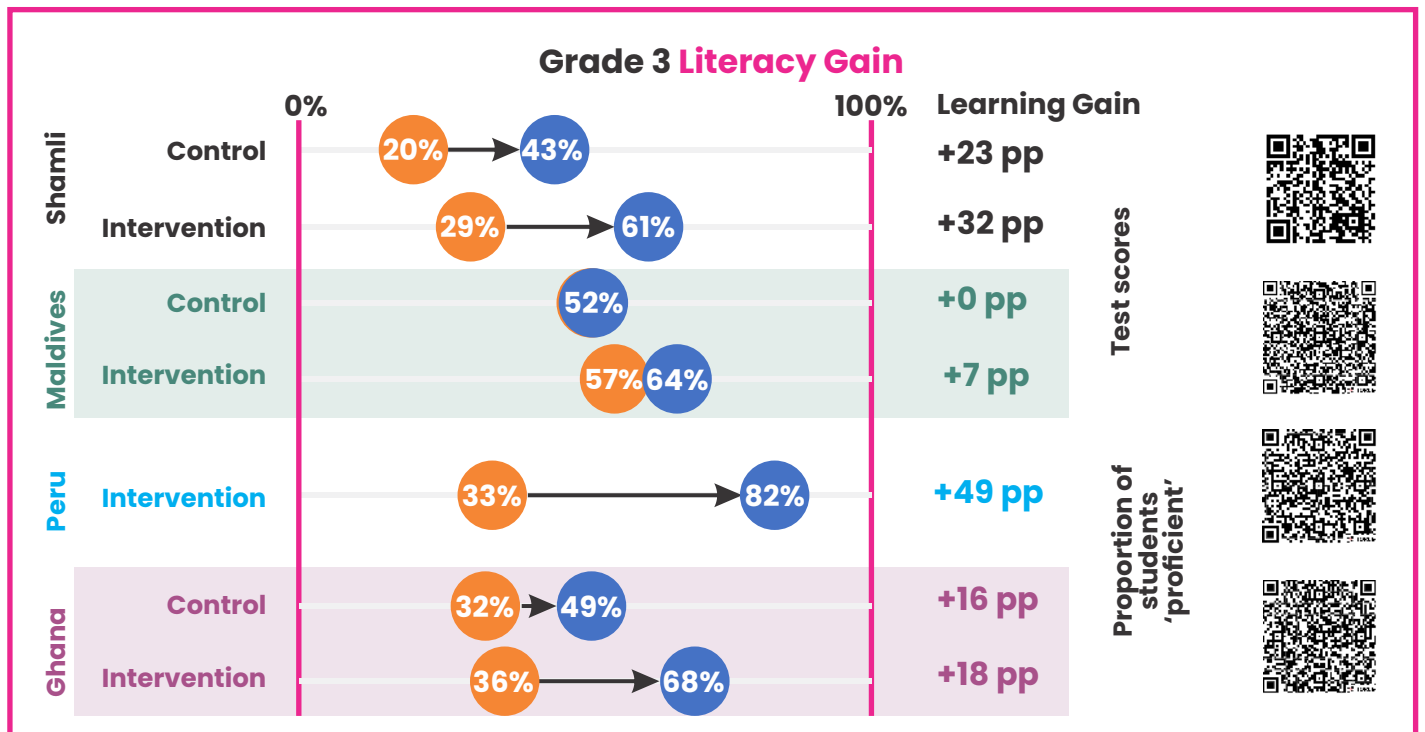
- ✓ Rigorous, externally published
- ✓ Study design enables calculation of effect sizes
- ✓ International angle indicates applicability across diverse contexts

### Limitations of this Evidence Form

- x Only comparison to control group, no comparisons to other pedagogies
- or
- results globally

# VALIDATED RESULTS ACROSS CONTEXTS

Across different geographies where ALfA has been implemented and/or evaluated by a third party, randomised control trials have shown larger gains in ALfA schools compared to control, with far larger proportions of students achieving proficiency in both literacy and numeracy. In Peru, where there was a simple pre-post test with no control, the rapid learning gains of ALfA group provides strong evidence of its efficacy.



# 4+4 Research Pilots Randomised Control Trials

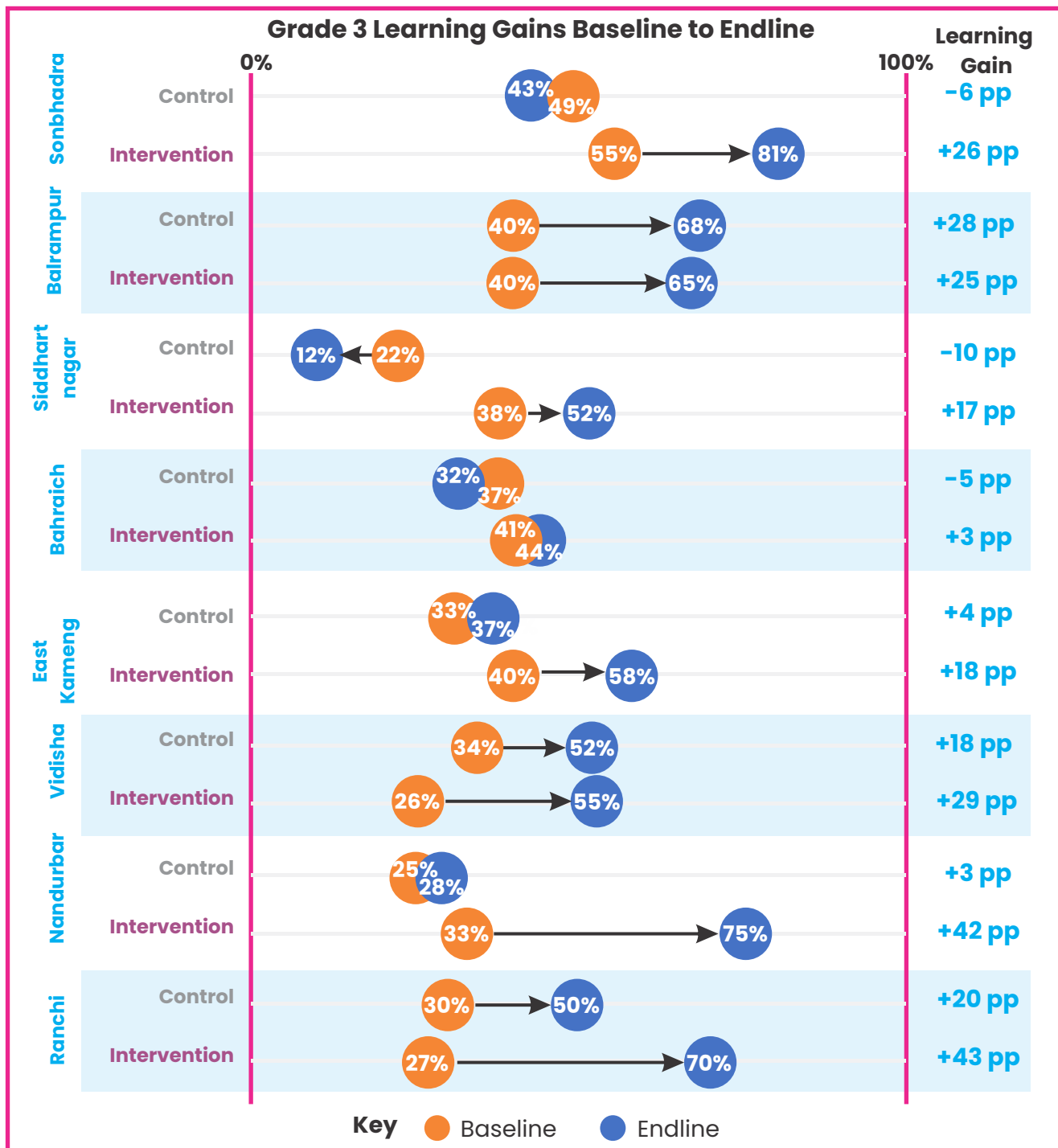
DEVI typically conducts a rigorous research implementation before scaling up in any new geography. Under the supervision of the BSA, DIET principal, or other appropriate government authority; a list of schools is prepared and 8 schools selected at random. These are further allocated randomly, with 4 receiving ALfA materials and training and the other 4 continuing with their normal approach. Baseline and endline tests are conducted in both sets of schools, typically by D.El.Ed or other college students after training by DEVI team. The difference in difference analysis then reveals



Scan QR to read  
India Impact Report

Geography	Group	# students	Grade 2	Grade 3
Sonbhadra, UP	Non-ALfA	98	36%→48% <b>+12pp</b>	49%→43% <b>-6pp</b>
	ALfA	124	53%→69% <b>+17pp</b>	55%→81% <b>+26pp</b>
Balrampur, UP	Non-ALfA	346	37%→52% <b>+15pp</b>	40%→68% <b>+28pp</b>
	ALfA	368	23%→59% <b>+17pp</b>	40%→65% <b>+25pp</b>
Siddharth Nagar, UP	Non-ALfA	465	17%→20% <b>+3pp</b>	22%→12% <b>-10pp</b>
	ALfA	638	17%→39% <b>+22pp</b>	38%→52% <b>+17pp</b>
Bahraich, UP	Non-ALfA	523	32%→25% <b>-7pp</b>	37%→32% <b>-5pp</b>
	ALfA	561	30%→33% <b>+3pp</b>	41%→44% <b>+3pp</b>
East Kameng, Arunachal	Non-ALfA	473	31%→44% <b>+13pp</b>	33%→37% <b>+4pp</b>
	ALfA	501	27%→45% <b>+18pp</b>	40%→58% <b>+18pp</b>
Vidisha, MP	Non-ALfA	620	33%→50% <b>+17pp</b>	34%→52% <b>+18pp</b>
	ALfA	528	20%→40% <b>+20pp</b>	26%→55% <b>+29pp</b>
Nandurbar, Maharashtra	Non-ALfA	615	NA	25%→28% <b>+3pp</b>
	ALfA	402	NA	33%→75% <b>+42pp</b>
Ranchi, Jharkhand	Non-ALfA	651	20%→36% <b>+16pp</b>	30%→50% <b>+20pp</b>
	ALfA	902	17%→65% <b>+48pp</b>	27%→70% <b>+43pp</b>

# 4+4 RANDOMISED CONTROL TRIALS



## Strengths of this Evidence Form

- ✓ Tests conducted under BSA/DIET principal supervision
- ✓ Randomised Control Trial

## Limitations of this Evidence Form

- ✗ Relatively small sample size of 4 intervention & 4 control schools
- ✗ Sometimes delays between teacher training and baseline increased baselin scores of treatment group

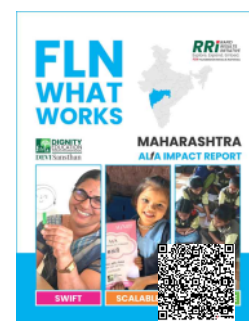
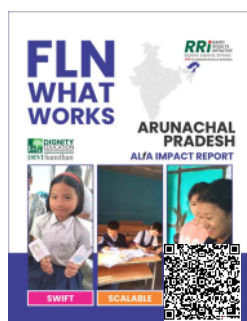
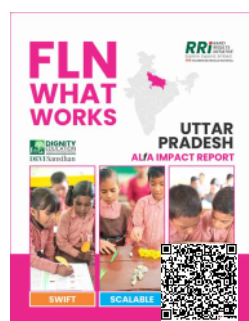
# Large-Scale Assessments Geography-wide implementations

DEVI has also arranged for large-sample-size assessments in some geographies where ALfA is being implemented across a whole block or district. This has typically involved testing across all Grades 1-5. Though there are no control schools in this approach, a pseudo-longitudinal approach allows an estimation of ALfA's efficacy. For instance, Grade 1 students in Reasi, Jammu increased their test scores from 31% to 61% with 6 months of ALfA implementation. The same schools' Grade 5 students had scored 61% at the baseline - indicating that ALfA had created approximately 4 years' worth of learning gain. Other geographies in Jammu and Uttar Pradesh had similarly dramatic outcomes.



Geography	Schools	Students	Hindi, Grade 3	Maths, Grade 3
Rajouri, Jammu	61	1,023	26%→82% <b>+56pp</b>	28%→90% <b>+72pp</b>
Reasi, Jammu	112	3,230	42%→68% <b>+26pp</b>	57%→78% <b>+21pp</b>
Hilauli (Unnao) UP	155	14,503	46%→69% <b>+23pp</b>	35%→55% <b>+20pp</b>

Click/Scan QRs to read state-wise impact reports



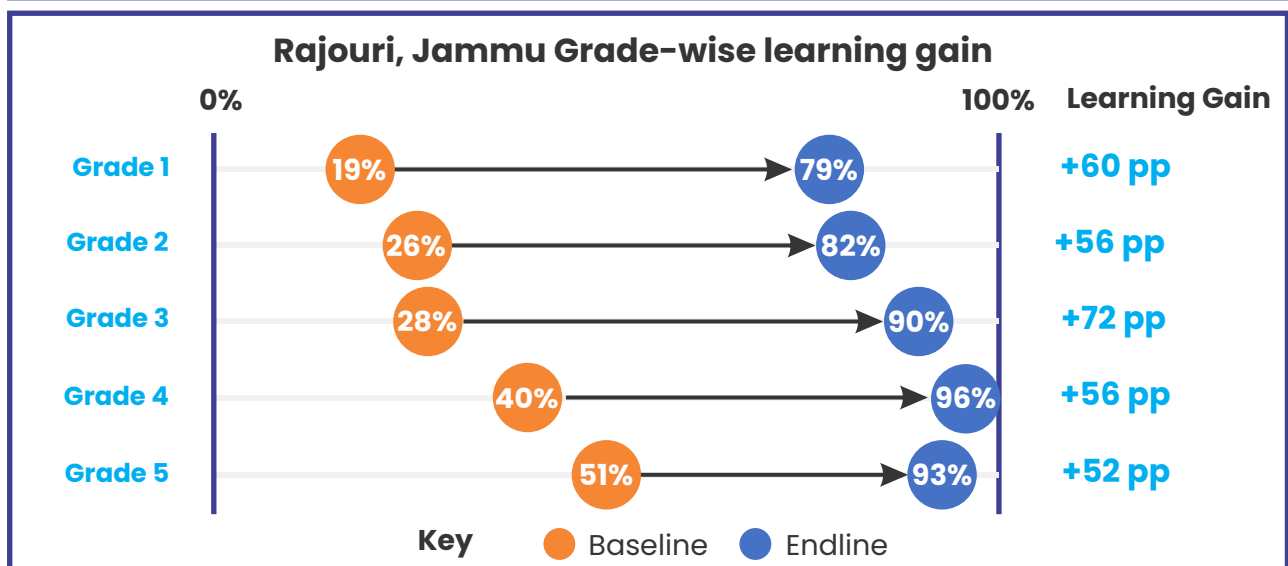
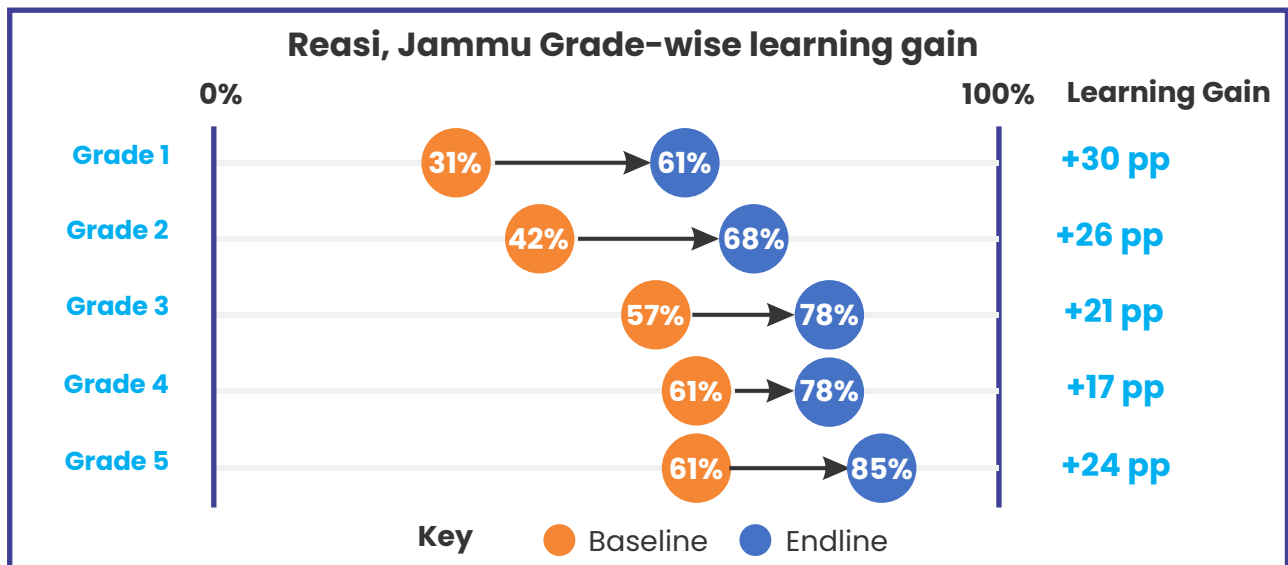
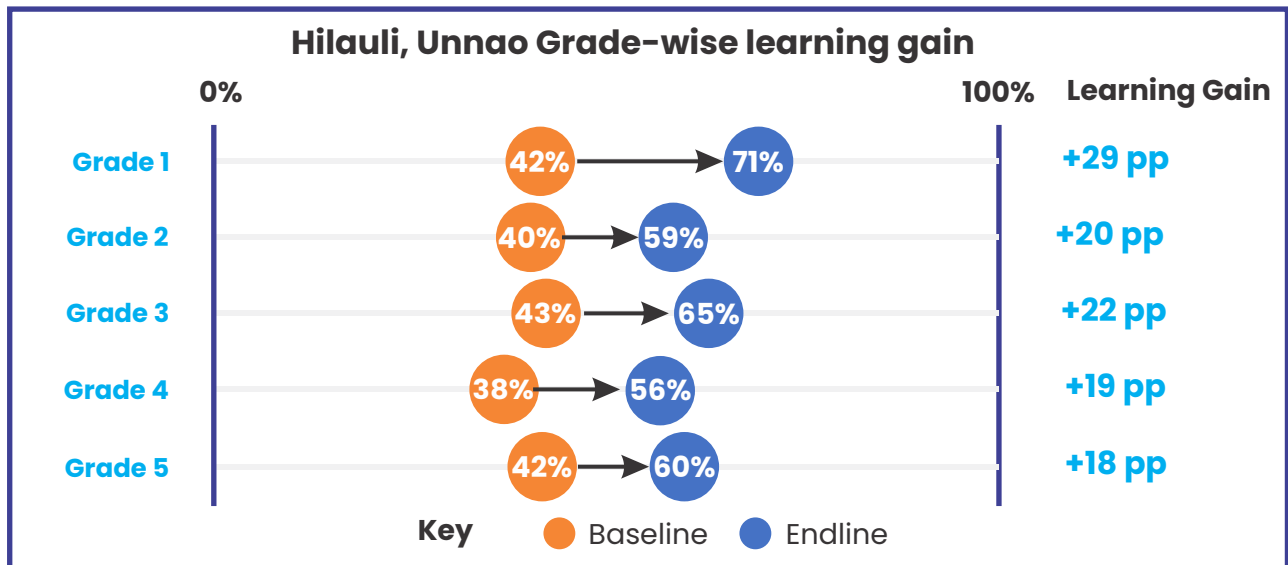
## Strengths of this Evidence Form

- ✓ Large sample size
- ✓ Detailed Grade-wise analysis is available
- ✓ Competency-wise data is available

## Limitations of this Evidence Form

- ✗ No control group for rigorous comparison

# LARGE IMPACTS EQUIVALENT TO MULTIPLE YEARS OF LEARNING



# FLN


## WHAT WORKS


### ALFA

## EVIDENCE REPOSITORY

*Accelerating  
Learning for All*



 740 840 6000

 [dignityeducation.org](http://dignityeducation.org)

 [info@dignityeducation.org](mailto:info@dignityeducation.org)